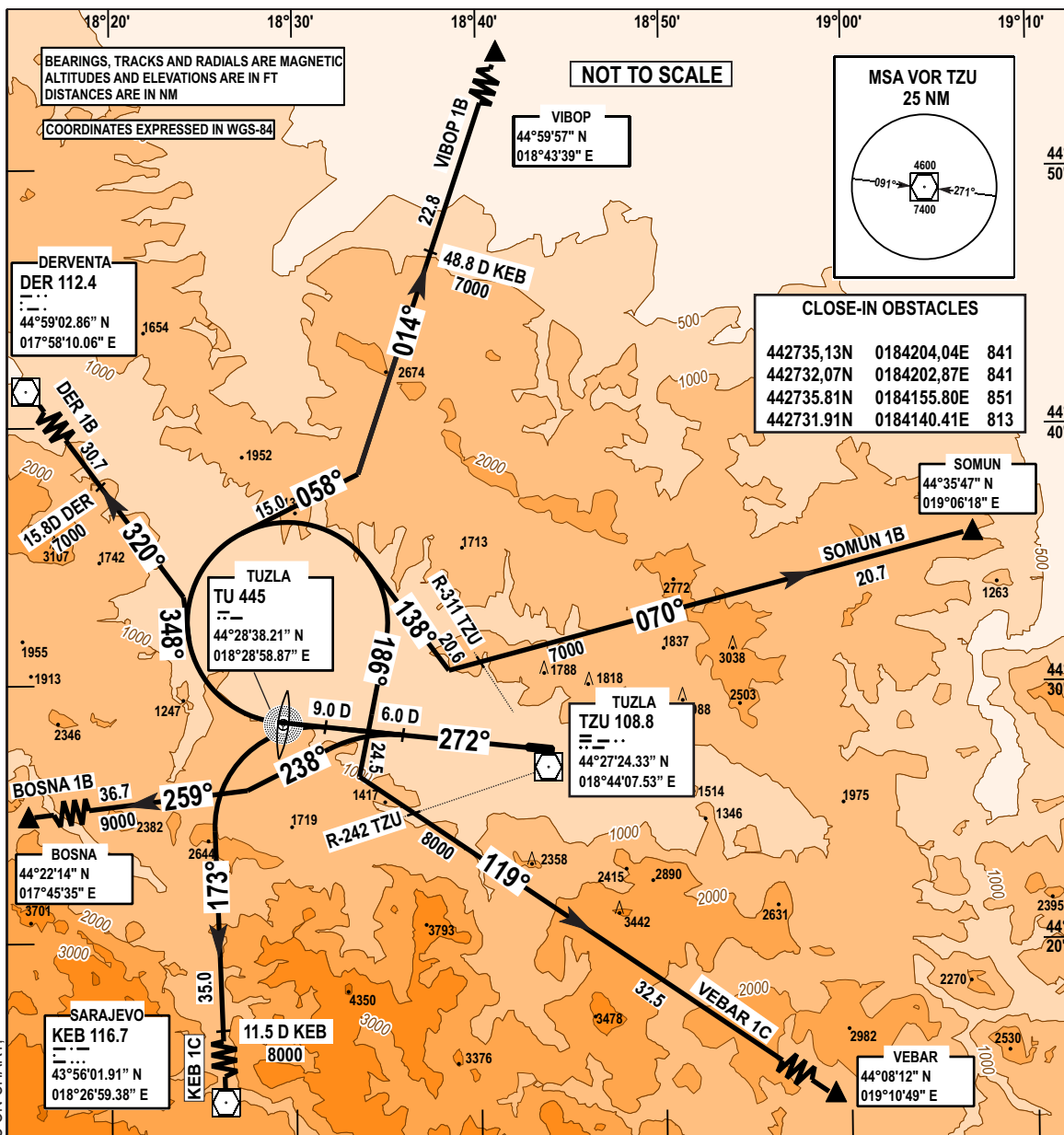


**STANDARD DEPARTURE CHART
INSTRUMENT (SID) - ICAO**

TRANSITION
ALTITUDE
10 000 FT
VAR 5° E (2020)

APP 120.350
TWR 132.925

**TUZLA (LQTZ)
RWY 27**



CHG:KEB 1B AND VEBAR 1B RENAMED TO KEB 1C AND VEBAR 1C ON CHART.

- KEB 1C DEPARTURE - RWY27**
Climb straight ahead. At 9.0D TZU turn left to intercept and follow R-353 KEB climbing to KEB VORDME. Cross 9.0D TZU at or above 2870 ft and 11.5 D KEB at or above 8000 ft. This procedure requires PDG of 4.4% until 4600 ft.
- BOSNA 1B DEPARTURE - RWY27**
Climb straight ahead. At 6.0D TZU turn left onto course 238° to intercept and follow R-259 TZU climbing to BOSNA POINT. Cross 6.0D TZU at or above 1750 ft and BOSNA POINT at or above 9000 ft.
- DER 1B DEPARTURE - RWY27**
Climb straight ahead. At NDB TU turn right onto course 348° to intercept and follow TU QDR-320° climbing to DER VOR. Cross NDB TU at or above 2740 ft and 15.8 D DER at or above 7000 ft.
- VIBOP 1B DEPARTURE - RWY27**
Climb straight ahead. At NDB TU turn right onto course 058° to intercept and follow TU QDR-014° climbing to VIBOP POINT. Cross NDB TU at or above 2740 ft and 48.8 D KEB at or above 7000 ft.
- SOMUN 1B DEPARTURE - RWY27**
Climb straight ahead. At NDB TU turn right onto course 138° to intercept and follow TU QDR-070° climbing to SOMUN POINT. Cross NDB TU at or above 2740 ft and R-311 TZU at or above 7000 ft.
- VEBAR 1C DEPARTURE - RWY27**
Climb straight ahead. At NDB TU turn right onto course 186° to intercept and follow TU QDR-119° climbing to VEBAR POINT. Cross NDB TU at or above 2740 ft and R-242 TZU at or above 8000 ft.

THIS PAGE INTENTIONALLY LEFT BLANK